

Belfairs Methodist Church

Where old friends meet and strangers feel at home

Newsletter

Issue 236

October 2025

Minister:

Rev Steve Mayo
1 Oakview Close, Leigh on Sea,
Essex SS9 4JN
Tel: 01702 483827
revdstevemayo@gmail.com

Editor:

Mrs. Sue Spaul
E-mail: sue.spaul@hotmail.co.uk



Data Protection Privacy

By submitting an article for publication in the Belfairs Newsletter, you are **consenting** to your name being attributed to the article which is made **publicly available** via the Belfairs Methodist Church Website.

If you do **NOT** want your name to be published, please advise the Editor when submitting the article.

Please read our Privacy Policy for further information. This can be found on the church website or on our church noticeboards.

Thought for the month

Dear Lord

*Strengthen us to serve you in response to your love,
By giving freely to others without keeping a record
By working hard for others without counting the cost
And by being a blessing to others without even knowing it,
Eager to do your will for your name's sake.
Amen.*

The BRF Book of 100 Prayers



Our mission is to provide an open, welcoming and accepting, living place of Christian worship and service in our community, in which we seek to serve and follow Jesus Christ.

www.belfairsmethodistchurch.org.uk



Autumn is now upon us and we thank God for giving us a good summer this year; for the warmth of the sun and the beautiful blue skies; and we celebrate all these wonderful gifts from God through our Harvest Festivals which we celebrate in our churches at this time of year; decorating them which produce and provisions from God himself.

But rapidly advancing upon us is the 'busy season' when it is so easy to get stressed with shopping for Christmas, tidying the garden and preparing it for next spring etc. and we forget that God gave us a season for everything, not just seasons of varying weather, but seasons of life.

We will all experience times of hardship, perhaps suffering an illness ourselves or someone in our family. We might feel angry with God for something which goes wrong, or when someone dies, particularly at a young age. People ask "Why has God done this?" Please be assured God does not single out anyone to hurt, annoy or embarrass them. Things go wrong in our bodies. Sometimes we know why, but often we don't and the medical profession can't always give us the answer.

If you are reading this and are feeling that life's not good just now, remember that Jesus was born to save us all from sin and gave us God's promise of eventually having eternal life with him if we believe; an eternity where *'there will be no more death or mourning or crying or pain.'* [Revelation 21:4, NIV]

Life is hard and believing is not an insurance policy or a promise that life will be easy and plain sailing, but it is a promise that, through the Holy Spirit, we can cope and can receive the peace that passes all understanding. We have been given life to enjoy in all its fullness and that has nothing to do with money or possessions. God knows what we need.

So, whatever you are planning to do this coming season, include Jesus in your plans and receive his peace.

Blessings,

Revd. Steve

01702 483827

revdstevemayo@gmail.com

Sunday Services October 2025

5th	11.00 a.m.	Local Arrangement - Mr. Mike Spaul
12th	11.00 a.m.	Rev. Steve Mayo - Holy communion
19th	11.00 a.m.	Rev. Steve Mayo - Parade Service
26th	11.00 a.m.	Mr. Mike Fogg

Other October dates for your diary

4th	Coffee Morning 10.00 a.m. - Autumn
9th	Thirsty For?? Café worship at 7.00 p.m. - All are welcome
11th	Church Council at 10.00 a.m.
20th	Girls Brigade and Boys Brigade awards evening at 6.00 p.m.
23rd	A.C.T.I.O.N at 2.00 p.m. - all are welcome
26th	British Summertime Ends - Clocks go back 1 hour

Point of Contact

Below is shown details of the Sunday Stewards, Communion Stewards, Musician, Flower Rota and coffee/tea stewards relevant for this month.

Sunday 5th October

Sunday Steward - Phil Gladman

Musician a.m. - Sue and Mike Spaul/Midi Box

Coffee/tea stewards Ann Kendall & Sue Spaul

Sunday 12th October

Sunday Steward - Jan Andrews

Musician a.m. - Patrick Dromgoole

Communion Stewards – Neeltje Charles & Geoff Box

Flowers - Sue Spaul- in memory of her Dad and Mum - arranged by Margaret

Coffee/tea stewards Mike Spaul & Phil Gladman

Sunday 19th October

Sunday Steward a.m. - Mike Spaul

Musician a.m. - Small band

Coffee/tea stewards Jan Pope & Jackie Heinrich

Sunday 26th October

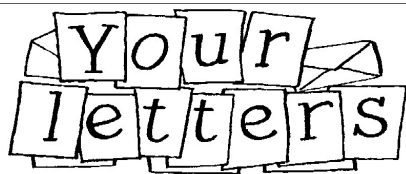
Sunday Steward - Phil Gladman

Musician a.m. - Patrick Dromgoole

Flowers - Dawn Howard - in memory of Dave - arranged by Jan

Coffee/tea stewards Margaret Bailey & Sue Spaul

Letters Page/Church family news



Hi Mike,

Thank you so much! The team were absolutely delighted, and it really lifted spirits in the office. Having a photo of you and Sue to go with it is just wonderful too, we can't wait to share it.

Your kindness and willingness to step in and help means the world to us, and it truly makes a difference to the people we support every single day. Please do pass on our heartfelt thanks to all at Belfairs Methodist Church – you're such an important part of our community.

With deepest gratitude,
Lucy

Lucy Purvis (she/her)
Community Fundraising and Engagement Coordinator
Mob: 07701244132

HARP (Central Office)
104-106 High Street
Southend on Sea
Essex
SS1 1JN



This was the main display for harvest although the window ledges and font were also filled with food together with another smaller display in the front foyer.

Birthdays

For all of you who celebrate birthday/anniversaries, or remember loved ones during this month, the following is for you, although of course everyone can read it!

On each waking, God give you his blessing

Cast away all darkness from around you

The strength of God be your support

Over unmapped mountains and troubled waters

Bless us with your beauty Lord

Enlighten our minds with your truth

Richer may we be through the gifts of God.

Ed.

At the start of a new school year

I am so glad that you're here.

Here's a little goodie bag to help kick off the year.

The eraser is to remind you that it is ok to make mistakes

We'll work together, no matter what it takes.

The stickers mean we'll stick together and work hard as a team

The puzzle shows how we fit together, working towards a common theme.

The bookmark is to show you

You always have a place.

If you ever feel a little lost

We'll help you find your space.

The smarties are to remind you how smart I think you are

Work hard and do your best

Remember to aim far!

Although this was written with school in mind, I think its rather applicable within all our groups here at Belfairs but also within church itself. Ed.



Please remember you are free to put your prayer concerns on the board at the back of the church. If it is not for you, please make sure you have the named persons consent .

Please add your name and date to the request on the reverse of the white cards provided which are by the board. These will be removed after two months, but can be updated if necessary (please make sure you re-date the update).

If you have any questions or queries, please speak to Sue.



You never know the true impact you have on those around you.

You never know how much someone needed that smile you gave them.

You never know how much your kindness turned someone's entire life around.

You never know how much someone needed that long hug or deep talk.

So don't wait to be kind.

Don't wait for someone else to be kind first.

Don't wait for better circumstances or for someone to change.

Just be kind, because you never know how much someone needs it.

Ed.

Why English is so hard to learn

YOU think English is easy?

Check out the following.

- | | |
|--|---|
| 1. The bandage was wound around the wound | 14. The buck does funny things when the does (females) are present. |
| 2. The farm was cultivated to produce produce | 15. A seamstress and a sewer fell down into a sewer line. |
| 3. The Dump was full so the workers had to refuse more refuse | 16. To help with planting the farmer taught his sow to sow. |
| 4. We must polish the Polish furniture shown at the store. | 17. The wind was far too strong to wind the sail around the mast. |
| 5. He could lead if he would get the lead out | 18. Upon seeing the tear in her painting she shed a tear. |
| 6. The soldier decided to desert his tasty dessert in the desert. | 19. I had to subject the subject to a series of tests. |
| 7. Since there is no time like the present, he thought it was time to present the present to his girlfriend. | 20. How can I intimate this to my most intimate friend. |
| 8. A bass was painted on the head of the bass drum. | |
| 9. When shot at, the dove dove into the bushes. | |
| 10. I did not object to the object he showed me. | |
| 11. The insurance was invalid for the invalid in his hospital bed. | |
| 12. There was a row among the oarsmen about who would row. | |
| 13. They were too close to the door to close it. | |

Ed.

Fabulous Flower Lady Faye!!

You may have seen in a recent Echo that Faye from The Flower Stores in Eastwood Old Road has won an award as the best florist in the county!! What an achievement! She regularly helps us out at Belfairs with the Easter and Christmas gifts, and always gives us a discount on the flowers we buy for arrangements on Sundays.

You will not know that September 9th marks 40 years since she began her career as simply an assistant in a green-grocers who also needed someone to do flowers. Having no set idea of what to do when she left school, this happy coincidence was the start of a “blossoming” career! Sadly it coincided with the death of her mother, so the date is bitter sweet.

So well done Faye and here’s to another 40 years!!



Anthea Meek

The 3 types of people in your life



The leaf people

These come into your life for just a season. You can’t depend on them, they are weak. They only come to take what they want, then they leave.



The branch people

They are strong, but break away when life becomes tough. They will stay a season, but will go when life becomes harder.



The root people

These are very important people, they don’t do things to be seen. They stay during the difficult times and they don’t ever leave.

**UNITED METHODIST CHURCH
HIGH STREET, GREAT WAKERING**

F.E.E.T

**Family Fun
Exploring
Everything
Together
At United
Methodist
Church**

**Drinks
and
Biscuits**

**Fun
activities**

Singing

**SATURDAY, 11TH OCTOBER
AT 10.00 AM**

**SUNDAY 12TH OCTOBER AT 10.30 AM
YOU ARE WELCOME AT OUR
HARVEST FESTIVAL SERVICE**



You Are Invited to a

Traditional

Afternoon Tea

***at United Methodist Church
High Street, Great Wakering***

on

Friday 17th October

2.00pm - 4.00pm

£7.50 per person.

To ensure a place, please contact the church office on

07752 859296 email: office@umcsouthend.org.uk

or ring Anita on 07375 402677



It's Beginning to Look a Lot Like Christmas (again!)

*An informal entertainment of Carols &
Seasonal Singalongs with a Brass Band*

with The Southend Band

Admission by Ticket Only – £5 each
(light refreshments included)*



© David Humell 2025

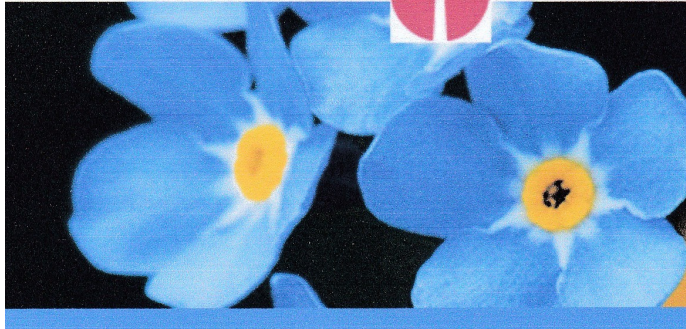
Saturday 29th November 2025

Starts 5.30pm (ends around 7.30pm)

Belfairs Methodist Church (Rear Hall†)

EASTWOOD ROAD NORTH SS9 4NG

* Box Office: mike.spaul@hotmail.co.uk † access via car park



MEMORY WORSHIP

Worship for those
with & without
Dementia



2 PM - 4 PM
3RD MONDAY
OF THE MONTH

MEMORY WORSHIP

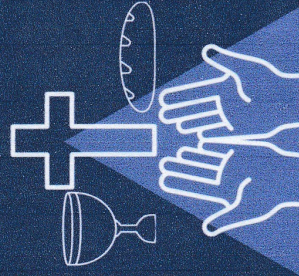
3RD MONDAY OF THE MONTH
2PM - 4PM

Worship for those with and without dementia. Our 'dementia friend' team are on hand with tea, cake and fellowship.

15th September
20th October
17th November
15th December
19th January
16th February
16th March
20th April
18th May
15th June
20th July
17th August

ALTERNATIVE WORSHIP 2025-2026

MIDWEEK COMMUNION & TIME FOR PRAYER



2ND WEDNESDAY
OF THE MONTH
9AM & 9.30AM

WESLEY METHODIST CHURCH
ELM ROAD, LEIGH-ON-SEA
SS9 1SJ

MIDWEEK COMMUNION & TIME FOR PRAYER

2ND WEDNESDAY OF THE MONTH
9AM & 9.30AM

Midweek Communion service at 9am, with Time for Prayer at 9.30am for private & group prayer.

10th September
8th October
12th November
10th December
14th January
11th February
11th March
8th April
13th May
10th June
8th July
No meeting in August



www.wesleymethodist.org.uk

Wesley Methodist Church



REFLECTIVE
WORSHIP

WEDNESDAYS
ONCE A QUARTER
6.30PM

WESLEY METHODIST CHURCH
ELM ROAD, LEIGH-ON-SEA
SS9 1SJ



REFLECTIVE WORSHIP

WEDNESDAYS - ONCE A QUARTER
6.30PM - 7.30PM

Reflective Worship focuses on quiet, more contemplative and meditative styles of worship. In an informal and relaxed setting.

29th October
18th February

27th May
22nd July

ALTERNATIVE WORSHIP 2025-2026

INSPIRE

4TH SUNDAY OF THE MONTH
5.30PM - 6.30PM

Inspire is our monthly service dedicated to contemporary worship, modern worship songs, prayer, activities and reflections.

28th September
26th October

23rd November

No service in December

25th January

22nd February

22nd March

26th April

24th May

28th June

26th July

No service in August



www.wesleymethodist.org.uk

Inspire

EVERY 4TH SUNDAY
5.30PM

WESLEY METHODIST
CHURCH

ELM ROAD, LEIGH-ON-SEA
SS9 1SJ

When things feel too overwhelming, remember:
One day at a time, One thought at a time,
One moment at a time, and
One task at a time.

Music can make your heart dance. Studies show that the body's breathing and heart rate changes rhythm and synchronizes to the music being played, which can explain why you get chills when listening to something awesome.



Puzzled? Talk to God. He can make the pieces fit.

I never cared about material things someone could give me. I care about time, honesty, loyalty and effort. Those gifts mean more than anything money could buy.

I am who I am.
Like me. Love me. Take me. Leave me.
Know that I am a true friend to the end and ask for nothing in return except two things: don't hurt me or use me.

Sometimes we forget how blessed we are. My hot water works, I have groceries to eat, I can still afford eggs, I have clean sheets on my bed, I have family and friends that love me, and I woke up today. If that's not blessed I don't know what is.

Time is like a river: You cannot touch the same water twice, because the flow that has passed will never pass again. Enjoy every moment of your life.

Never stop doing little things for others. Sometimes those little things occupy the biggest part of their hearts.

We don't know what tomorrow will bring. So don't stay mad for too long. Learn to forgive and love with all your heart. Don't worry about people who don't like you. Enjoy the ones who **LOVE YOU**.

When you are lonely, I wish you love.
When you are down, I wish you joy.
When you are troubled, I wish you peace.
When things look empty, I wish you hope.

BELFAIRS METHODIST CHURCH Eastwood Road North, Leigh-on-Sea, Essex.

REGULAR WEEKLY MEETINGS :

SUNDAY SERVICES 11.00 a.m. (6.30 p.m. as announced)

Family Crafternoon 3.00 p.m.-4.30 p.m. (Dates as announced)

MONDAY
6.00 p.m. Boys' Brigade Anchor Boys
6.00 p.m. Boys' Brigade Junior Section
7.30 p.m. Boys' Brigade Company Section

TUESDAY 8.00 p.m. Badminton Club

WEDNESDAY
10.00 a.m. Parent & Toddlers
5.30 p.m. Girls' Brigade Explorers & Juniors
7.00 p.m. Girls' Brigade Seniors & Brigaders

THURSDAY

FRIDAY

SATURDAY 10.00 a.m. 'Open House' Coffee Morning - first Saturday of the month

MONTHLY MEETINGS

Thirsty For?? 7.00 p.m. 2nd Thursday
A.C.T.I.O.N 2.00 p.m. 4th Thursday

November newsletter:

Articles are welcomed at any time, but the deadline for last minute items is **19th October 2025.**

Articles can be e-mailed to sue.spauell@hotmail.co.uk or placed in the newsletter box in the front foyer. Thank you